

## Safety Precautions

Please read these installation instructions thoroughly and keep them safe for later!

- The luminaire is only suitable for operation in dry and closed rooms, but not for outdoor areas.
- Electrical work and repairs must be performed by a qualified electrician.
- During installation, always observe the national installation regulations.
- The luminaire must not be modified in any way. Risk of electric shock and accident.
- Only use parts assigned by the manufacturer.
- Never use additional attachments (e.g. for decoration).
- Connection work must not be completed under live voltage.
- Only the manufacturer, its service representative or a designated specialist may carry out repairs or replacement.
- To avoid eye injuries do not look directly at the lighted luminaire.

## Symbols used in this document



Caution: Risk to health and the product.



Do not use outdoors or in damp environments



Protection class II.



Light source replaceable by specialist.



Operating device replaceable by specialist.

**D/E**

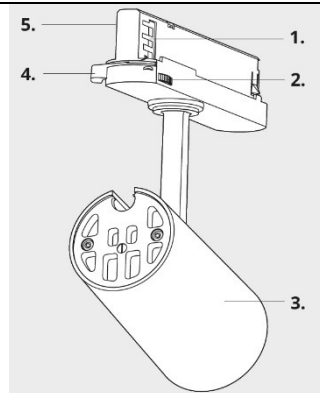
This product contains a light source of energy efficiency class D or E (see type plate).

## Specifications

Luminaire type	LED track light
Fastening	3-phase power rail
Suitable power rails	GlobalTrac Pro, Stucchi One Track 3 Circuit
Nominal voltage	220-240 V~, 50/60 Hz
Rated power	8 W – 28 W (See type plate)
Protection class	II
Degree of protection	IP 20
Energy efficiency class	D/E (See type plate)
Color temperature	2.700 K – 4.000 K (See type plate)
Power supply	200 mA – 700 mA (See type plate)
Weight	0.5 kg

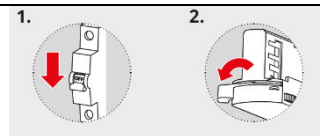
## Overview

1. Contacts
2. Phase selection dial
3. Spotlight
4. Retaining latch
5. Adapter



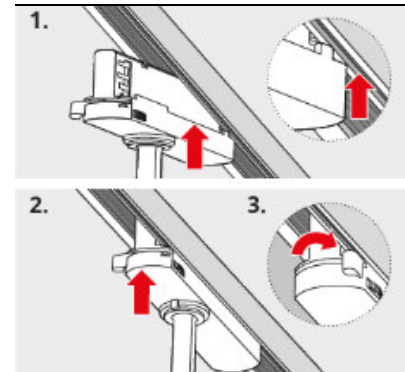
## Before installation

1. Switch the circuit breakers off. Make sure that all poles are switched off.
2. Make sure that the retaining latch is unlocked and that all contacts and latches are flush in the adapter.



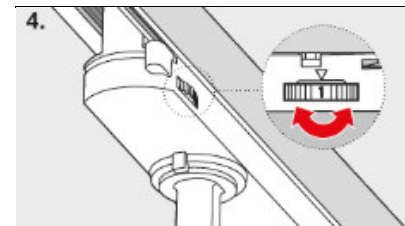
## Installation

### Inserting the spotlight



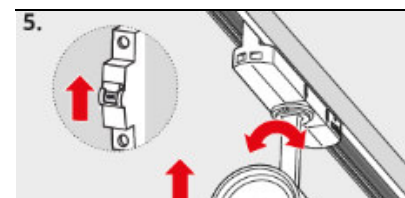
1. The adapter can only be inserted correctly in one direction. Make sure that the guide on the adapter fits into the recess in the power rail.
2. Insert the spotlight into the power rail with the correct orientation.
3. Lock it with the retaining latch..

### Setting the phase



4. Use the phase selection dial to select phase 1, 2 or 3. This means that three lighting groups can be switched individually within a rail.  
Note: The displays for 1 and 2 are on one side of the luminaire, the display for 3 on the other.

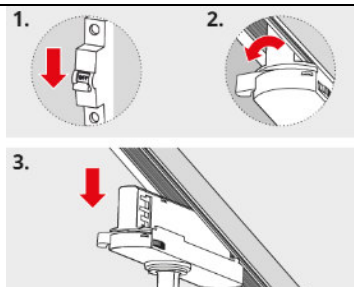
### Use



5. Switch the circuit breakers back on.
6. Rotate the spotlight to the desired position.

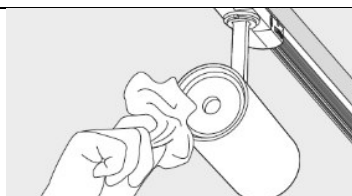
## Removing the spotlight

1. Switch the circuit breakers off. Make sure that all poles are switched off.
2. Unlock the retaining latch.
3. Remove the spotlight.



## Cleaning

Wipe the luminaire with a soft, dry cloth only. Never use solvent-based or abrasive cleaners. Always avoid contact between electrical components and moisture.



## Waste disposal

The crossed-out wheeled bin symbol requires separate disposal for waste electrical and electronic equipment (WEEE). Such equipment may contain valuable, but dangerous and hazardous substances. You are required by law to return these products to a designated collection point for the recycling of WEEE and must not under any circumstances dispose of them as unsorted municipal waste. In this way, you can help to conserve resources and protect the environment.

Make sure that lamps which can be removed from the appliance without destroying it have been removed from the appliance before disposing of it.

For further details, please consult [www.oechsler.com](http://www.oechsler.com) or your local authorities.

Children must not play with plastic bags and packaging material, due to the risk of injury and suffocation. Store such material safely or dispose of it in an environmentally friendly way.

## Oechsler AG

Matthias-Oechsler-Straße 9  
91522 Ansbach / Germany

[www.oechsler.com](http://www.oechsler.com)



OE-Gen1 Series-V0.1-2024/01